

Full Length Research Paper

Problems regarding the protection of traditional urban pattern: The case of Bartın, Turkey

Sebahat Aciksoz^{1*}, Sevgi Gormus¹ and Bulent Yilmaz²

¹Bartın University, Faculty of Forestry, Department of Landscape Architecture, 74200, Bartın, Turkey.

²Inonu University, Faculty of Fine Arts, Department of Landscape Architecture, 44800, Bartın, Turkey.

Accepted 21 January, 2010

Historical texture of the settlement is one of the important factors in the past and present of the culture. Important components of this historical pattern are historical places of the city and the traditional patterns which create this structure. To save this historical pattern should be the first aim of the governments in order to carry them to the future generations. Turkey has signed many international agreements about conservation of historical pattern. But, legal alignments related to this issue do not completely cover “the conservation principle”, so the institutions, which are responsible for saving this pattern, are in danger of becoming destroyed due to this type of management. The most striking example of such understanding seems to be Bartın. This paper presents an argument about the protection of historical places in Turkey, on the local scale. The town and cities which have historical patterns have continued to lose their urban landscapes as urbanisation has been increasing in Turkey. This paper illustrates the result of traditional texture and historical pattern of the Bartın Province facing problems such as losing them due to expanding urbanisation in Bartın, which has 3000 years-old historical structure, as one’s model. In recent years, urbanisation has been highly expanding in Bartın; urban identity has started losing its originality, because of carelessly built constructions and recreation lands. This event demonstrates the critical role of policy implementation and socio-cultural factors on sustainability of historical patterns in urban landscapes of Bartın. This should include the community, local governments, and the whole range of non-governmental organizations including the private sector.

Keywords: Historical urban site, conservation, 2863 numbered law, Bartın, Turkey.

INTRODUCTION

In the last century, urban population in the world has increased from 14 to 25% and the urban growth rate has reached 0.8% in a year (UNDP, 1991; Weber, 2003). The demand to the new spaces for settlement has grown because of the increased population. This caused change of urban landscape values such as land use and land cover (Garba and Al-Mubaiyedh, 1999). Many of Europe’s cultural landscapes have experienced a remarkable change during the 20th century (Bender et al., 2003).

Urbanization is virtually a dominant phenomenon in all developing countries (ADB/ICIMOD, 2006; Thapa et al., 2007). Development is essential to satisfy human needs and improve the quality of human life. At the same time,

development must be based on the efficient and environmentally responsible use of society’s entire source, resources-natural, human, and economic. Sustainable development has a number of objectives. In planning for development, there must be deliberate consideration of how to maintain the quality of the environment; human well-being and economic security. In our common future and subsequently Agenda 21 set out recommendations for developed and developing nations regarding sustainable development strategies concerning clean water, water supply, energy, land use, housing, waste treatment, transportation, and health care (Dinfo, 2009). Besides, international regulations related to the conservation of cultural and natural heritages are being assessed together with human rights today. Many meetings and forums are held related to this issue in The Third Session of UN-HABITAT World Urban Forum (UN-HABITAT, 2009).

*Corresponding author. E-mail: saciksoz@yahoo.com.

Over 8000 participants from 150 countries gathered in Vancouver, Canada for The Third Session of UN-HABITAT World Urban Forum. The biennial UN-HABITAT event on urban sustainability examines and identifies solutions to the critical problems cities are facing with around the globe. The forum is entitled “our future; sustainability” and debated “world heritage and historical urban landscapes” and “the role of municipalities in enhancing the right to the city concept at local level” (UN-HABITAT, 2009).

“What is sustainability? “The world commission on environmental and development defined sustainable development” as “development that meets the needs of the present without compromising the ability of future generations to meet their own needs” in other words; development is essential to satisfy human needs and improve the quality of human life. At the same time, development must be based on the efficient and environmentally responsible use of society’s entire source, resources-natural, human, and economic. Sustainable development has a number of objectives. In the planning for development, there must be deliberate consideration of how to maintain the quality of the environment; human well-being and economic security (SDInfo, 2009).

“Recent concern with governance in urban areas stems from a more general attention being paid to -good governance- as a development issue” (Robinson, 1995). Conservation of cultural and natural heritages is one of the important topics in 2000’s in which the countries and communities are interested. Conservation of cultural and natural heritages is a field that European Council, European Union, and different international foundations have worked on.

The process of conservation of historical urban landscapes began between 1930 and 1935; but conservation was not carried out by ministry. In 1957, it was decided by the government that a ministry about conservation of cultural and natural heritages had to be established, for the purpose of advertising these wealth. However, industrialization and urbanization, which have expanded result of following economic politics, have led to increase unearned increment in the historical core. For this reason, “urban conservation planning” concept was developed.

In 1973, “cultural heritages of the law 1710 numbered”, which has been accepted as the first law of republic period, has gone into effect. With the law, it has been decided that the cultural heritage should be controlled by the government (Dagistan, 2006).

Conservation of cultural and natural heritages has been taken into guarantee in 1982 Constitution. In 1983, “the Law of Conservation of Cultural and Natural Heritages (2863 numbered)” has gone into effect with this law, it has been decided that conservation should be proved with “development plan about conservation”. Also, “Regional Conservation Committees” have been established, which are responsible for controlling and deciding to protect places (Akurgal, 1998; Dagistan, 2006).

According to Taylor (2004), the globalizing tendency of the practices of international organizations such as United Nations Educational, Scientific and Cultural Organization (UNESCO), International Council on Monuments and Sites (ICOMOS), International Council of Museums (ICOM), and International Centre for the Study of the Preservation and Restoration of Cultural Property (ICCROM) is a powerful one.

Turkey has signed a lot of international agreements about conservation of cultural and natural heritages. These agreements are seen below:

- La Haye and European Cultural Convention (1954)
- Venice Agreement (1965)
- Convention Concerning the Protection of the World Cultural and Natural Heritage (1972)
- Convention for the Protection of the Architectural Heritage of Europe (1985)
- European Convention on the Protection of the Archaeological Heritage (1992)
- European Landscape Convention (2003)

Critics pertaining to politics of conservation and needs of European Union adaptation process have caused some changes at The Law Conservation of Cultural and Natural Heritages in 2004 and these changes vested Regional Conservation Committees with authority (Dagistan, 2006).

Turkey has many ministries that are responsible for conservation of cultural heritages, but, the most important of them is The Ministry of Culture and Tourism. Besides, local authorities, who have development plans, are responsible for conservation of cultural heritages in their territories.

Throughout history, different civilizations have been located in Turkey where this special feature can be still observed. Anatolia is a very important place which has a lot of historical settlements, such as Hittite, Lycia, Caria, Phrygia, Miken, Helen, Roman, Byzantium, Mesopotamia, and Ottoman Empire. As urbanization has been increasing in Turkey, town and cities which have historical patterns continue to lose their urban landscapes. Planning and management of urban landscape, which has historical value, requires serving urban diversity. This paper illustrates the result of carelessness of historical patterns in expanding urbanization to take place in Bartın, which has 3000 years-old historical structure, as one’s model.

MATERIALS AND METHODS

Materials

Bartın is situated within the geographic coordinates 41° 37' to 32°22'. The city is located in the Black Sea Region at average attitude of 25 m above sea level (Figure 1). The climate is typical Black Sea climate. In general, the annual maximum and minimum temperatures are between 21°C in summer, 6°C in winter. The City has two principal landforms; alluvial and floods plain along the



Figure 1. Location of study area.

Bartın River and hills in peri-urban.

Historical settlement is located around Bartın River which is the main river that is mentioned in the Iliad Epic of Homeros and known as Parthenius in Ancient Ages, and the river gives its name to the city, and the river is lover than its vicinity. It is accepted that Kaska (B.C. 1400) and Hittites (B.C. 1200) had lived in Bartın which shared the same past with Paphlagonia Province. Later Ions (B.C. 8/7. century), Persian (B.C. 546-334), Helens (B.C. 334-30), Roman (B.C. 70-AD 395), Byzantium (395-1440) and Ottomans (1460-1923) had lived in Bartın.

Method

The borders of study area were produced using municipality boundaries (1970 - 2009) and urban historical site (1970 - 2009). The results of analysis related to study were produced by digital data obtained by development plan of Bartın and aerial photos that were proved by Ministry of National Defence - General Command of Mapping. Aerial photos were rectified using ArcView 8.3 Georeferencing module. It seemed that historical urban landscape had changed from 1970 to 2009 at the study area.

In the study, municipality boundary (1970 - 2009) and border of urban historical site (1970 - 2009) have been identified on aerial photos. Available past data related to boundaries is 1970 and available last data is 2009. Change of historical landscape has been expressed using photographs in 1925 - 2009.

RESULTS AND DISCUSSION

In 2000, the population of Bartın is 184.178, and the annual population growth rate is approximately -11% in 1990 - 2000. In 2008, the total population of Bartın is 185.368 and urban population of Bartın is 47.999. The total populations of all districts in the province are decreasing when the population census results of 1990 and 2000 are compared (TUIK, 2009). On the other hand, the urban population growth rate of the province of Bartın is 11.8% and the population density is 127 people/km². Compared with 2000 - 2008 general and urban population, it has not changed on a great scale. Province of Bartın has entirely assessed as a historical urban site until 1970s.

In 1980, to eliminate economic stagnation and strengthening construction sector "development exemption" was realized by government. At that time, to benefit from it, 1503 application had been done to Bartın Municipality. In 1985, authority of development plan had been given to municipalities in Turkey. Nevertheless, unearned income increased on historical urban site.

In 1991, Bartın gained administrative province statute.



Figure 2. Change of historical landscape in Bartin.

Table 1. Comparison of land use change and population density: 1970 - 2008 (TUIK, 2009).

Land cover and population	1970 (ha)	2009 (ha)	Change (ha)	Change (%)
Municipality area	1.327	1.782	455	34.3
New urban area	196	578	382	194.5
Historical urban site	160	21	-139	-86.8
Total	1.683	2.381	698	17.0
Size of population	15.800	47.999	20.474	303.7

Nevertheless, in urban site, 200 changes on development plan caused lost of historical identity pattern and an investigation was held about these changes in 1993.

From that time, development plans have been contrary to “development law” which had been overhauled by Bank of Province and it has been decided that development plans should show twenty year’s development. However, between 1993 and 1999, eight ground plans (municipal plan controlling development and construction within an area) were accepted in Province of Bartın (Ozcan, 2001). As a result of these politics and applications, some problems have occurred in Bartın. The reasons of losing identity of traditional pattern are as follows;

- Migration to the city centre
- The increase of urban population
- The increase in need of building
- Intensive construction
- Disrepair of traditional settlement
- The danger of losing urban identity

To sum up, officially the number of registered 674 historical buildings and their gardens has decreased to 207

(Ozcan, 2001). Whereupon, historical urban landscape has been changed owing to following reasons (Figure 2):

- To construct new buildings within infringe all parks, green lawn, and roads
- To infringe building line with “proposal building”
- To increase floor in the same parcel
- To do building in agricultural lands and garden of historical building

In recent years, Bartın in which urbanization has been highly expanding has faced with losing its traditional texture. Urban identity started losing its originality, because of carelessly built constructions and recreation lands. Historical urban pattern in Bartın changed like as Figure 2.

It shows that about 10% historical land was converted to new developed area over all 30 years. Obviously, most new developed area comes from historical urban land (Table 1).

If Table 1, Figure 3 and Figure 4 have been evaluated, within the study area, historical urban area decreased from 12 to 2%, in the same time period, new urban area increased from 14 to 32% and the size of population

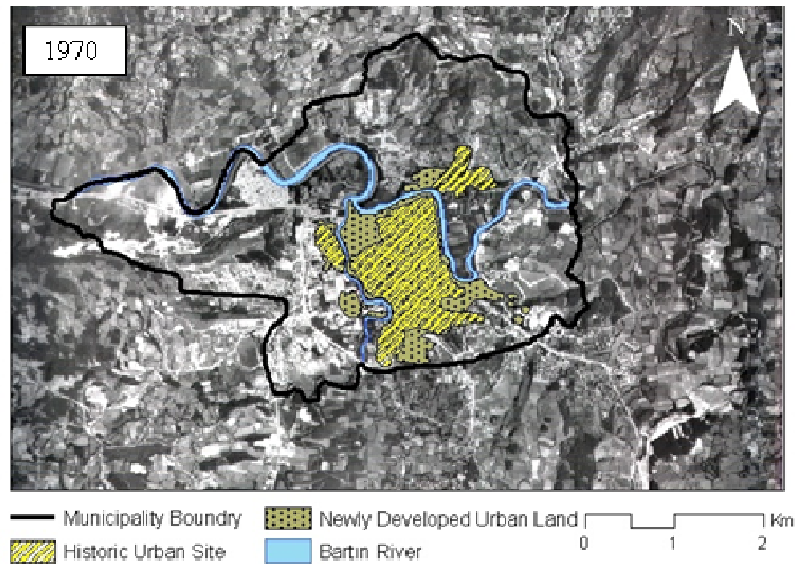


Figure 3. Boundary of the historical urban site in 1970.

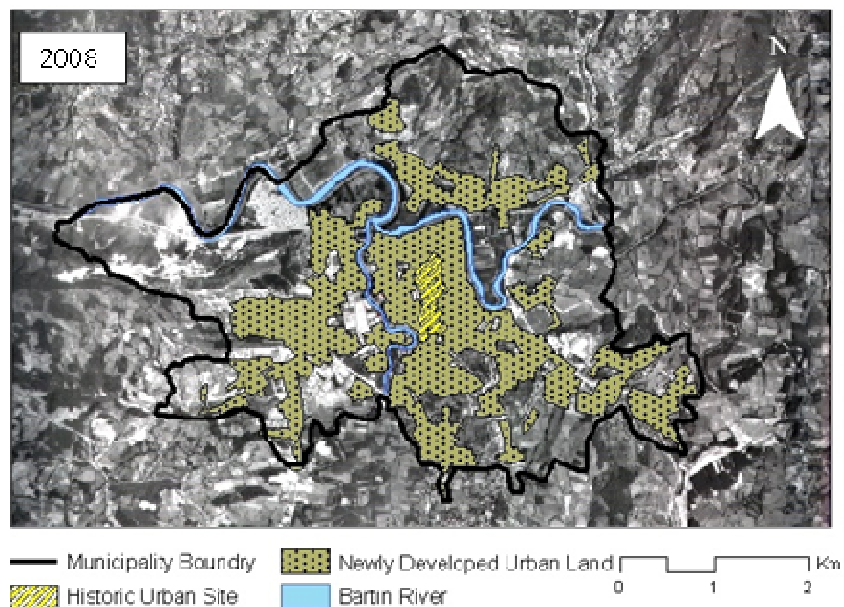


Figure 4. Boundary of the historical urban site in 2008.

increased to 129%.

Historical urban site will be influenced by new developed area in the future by means of economic factors and politics of local government.

If this situation go on and if new urban areas are built in historical urban site, historical urban landscapes will be exactly distinguished. Finally, Bartin will entirely lose its own historical urban pattern and historical urban landscapes.

Urban growth data for Bartin suggests that the historical urban landscape has undergone tremendous destruc-

tion. The percentage of historical urban landscape in this study was 12% in 1970. It decreased only to 2% in 2008. New developed areas have caused tremendous changes in landscape of the city. The predictions based on historical urban landscape suggest that the new will continue to expand and damage 2% of the historical site.

This event demonstrates the critical role of policy implementation and socio-cultural factors on sustainability of historical patterns in urban landscapes of Bartin. This should include the community, local and the governments, whole range of non-governmental organizations

including the private sector.

Increase of population is an effect on historical urban pattern. So new settlements areas have to identify and the new architectural structure in the new settlements area have to reflect historical pattern.

To conclude, the combination of historical and new landscape has affected urban identity. Change of urban identity has been an important effect on local economy. So, the characteristic of city must be supported by decision-maker and planners. And they have to aware that urban historical site of Bartın require maintaining and care. If this pressure goes on in the historical identity; the social organism, cultural landscape, and local economy will change for the worse. As a result of national and local politics and applications, City of Bartın has substantially lost own historical urban identity in the foreseeable future.

REFERENCES

- ADB/ICIMOD (2006). Environment assessment of Nepal: emerging issues and challenges. Asian Development Bank/ International Centre for Integrated Mountain Development, Kathmandu, Nepal.
- Akurgal E (1998). The cultural problems of Turkey. (Türkiye'nin Kültür Sorunları:in Turkish). Bilgi publisher, Ankara.
- Bender O, Böhmer HJ, Jens D, Schumacher KPH (2003). Using GIS to analyse long-term cultural landscape change in Southern Germany. *Landscape Urban Plann.* 70: 111–125.
- Dagistan OMZ (2006). To have a squint at the preservation of cultural heritage in Turkey. (Türkiye'de Kültürel Mirasın Korunmasına Kısa Bir Bakış: in Turkish). Accessed from: www.spo.org.tr.
- Garba SB, Al-Mubaiyedh S (1999). An assessment framework for public urban land management invention. *Land Use Policy*, October 19(4) 269-279.
- Ozcan U (2001). Sustainable development plan of Bartın. Phase II action plan: The main strategies for the economic and human development of Bartın, Bartın Municipality, Bartın.
- Robinson M (1995). Introduction towards democratic governance. Accessed from: <http://www.gdrc.org/u-gov/gender/gender-matters.html>.
- Dinfo S (2009). What is Sustainable Development? Accessed from: <http://www.sdinfo.gc.ca>.
- Taylor K (2004). Cultural heritage management: A possible role for charters and principles in Asia. *Taylor and Francis Ltd. Int. J. Herit. Stud.* 10(5): 417-433,
- Thapa RB, Murayama Y, Ale S (2007). City profile of Kathmandu. *Cities* 25, Accessed from: www.elsevier.com/locate/cities.
- TUIK (2009). Census of Population Social and Economic Characteristics of Population. Province 74 Bartın, Ankara. Accessed from: <http://tuikrapor.tuik.gov.tr/reports>.
- UNDP (1991). Human development report 1991. United Nations Development Program, Oxford University Press, Oxford.
- UN-HABITAT (2009). World Urban Forum III. Accessed from: <http://www.wuf3-fum3.ca>.
- Weber C (2003). Interaction model application for urban planning. *Landscape and Urban Planning*: 63, 49-60, Elsevier Science Lt.